

Model # MUOD1K

1-Ph, 1KVA, 220/230/240V, 50/60Hz, On-Line Double Conversion Outdoor UPS



Product Description

MUOD1K Outdoor Intelligent Smart Online UPS provide continuous pure sine wave AC power supply for outside communications / network equipment with high input and output power factor, self-adjusting output frequency, smart battery management system and network management, intelligent built-in air condition unit to support high ambient operating temperatures up to 55deg C. Built in pure copper based isolation transformers ensures additional level of protection and safety. Built-in static and manual bypass switches helps zero mSec UPD down time during repair or maintenance schedule, this also helps high availability of uninterrupted good quality of power supply all the time.

Model # MUOD1K

Inner view of MUOD1K UPS



Applications

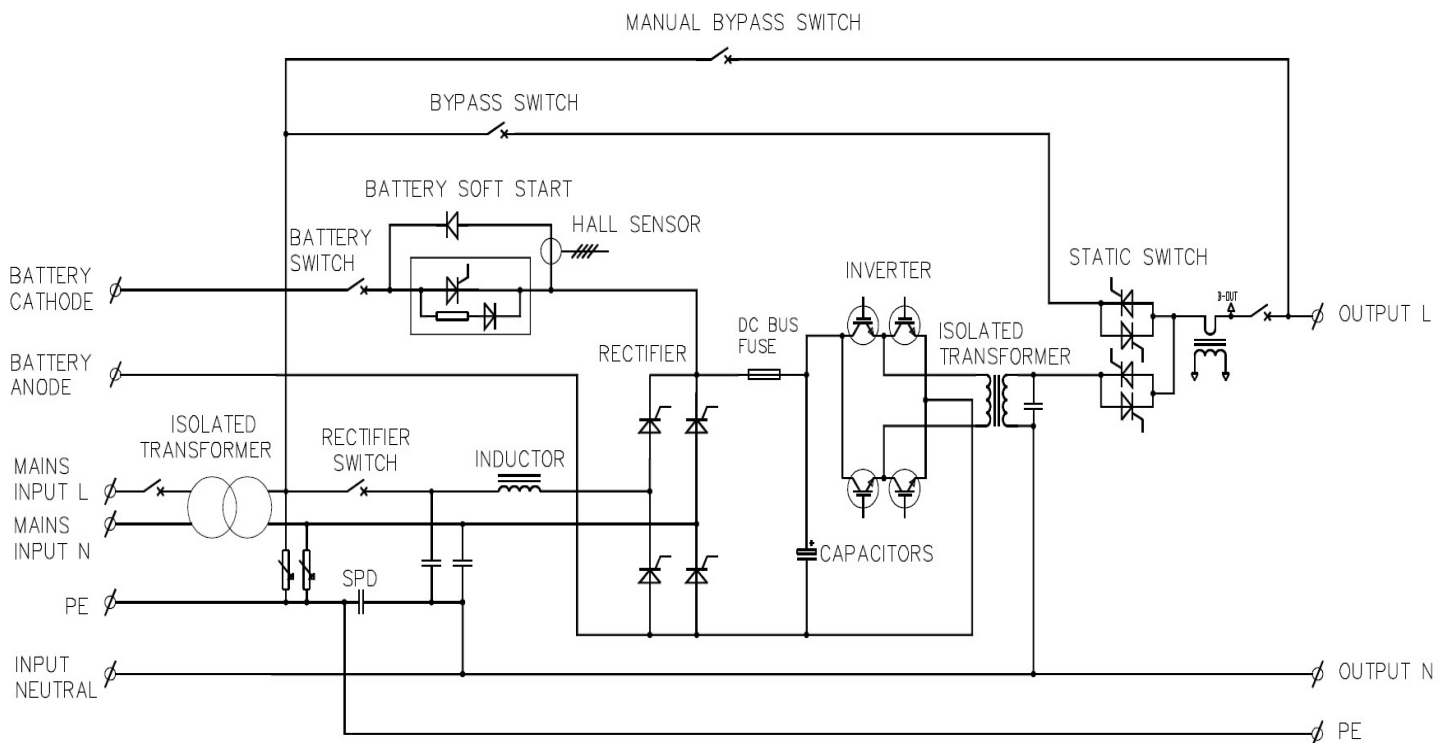
- Critical applications where ever higher reliability is needed
- Outdoor CCTV, security & surveillance
- Small Data centers & computer rooms
- Outdoor ATM closets, RTA signals
- Wide Telecom applications
- Defense and boarder security forces
- Mountains, bad environment, such as high temperature (+55 °C) / low temperature (-40 °C)
- Severe dust, moisture, rain, mist erosion, very poor power quality (voltage long term higher than 277V or less than 160V, frequency abnormal change) in the area
- Power Generation & distribution stations

Model # MUOD1K

Key Features

- Pure sine wave output with true on-line double conversion technology
- Built-in pure copper based Input/output isolation transformer
- Built-in static bypass switch
- Built-in manual bypass switch
- Built-in AC input surge protector
- Built-in AC DB with connectors and AC breakers with surge protection
- Intelligent air condition unit to support higher temperature operational environment
- High temperature resistant, anti-cold, sealing level of IP65
- Advanced semiconductor technology with DSP based smart control systems
- Wide range of input voltage and frequency of input window (- 45% +35% rated voltage and $\pm 10\%$ rated frequency)
- Wide range of input voltage while input PF>99%
- Output PF of 0.8 more powerful load capability
- Protection: Overvoltage, over load, low voltage, short circuit, battery over charge, battery deep discharge and over temperature
- LCD/LED display, monitoring all the operation status and alarms
- Abundant interface: RS232, SNMP

SLD



Model # MUOD1K

Product Specification

| MODEL | MUOD1K |
|---------------------------|--|
| | 1KVA |
| Capacity | 1KVA/0.8KW |
| Nominal Voltage | 220/230/240VAC |
| Nominal Frequency | 50HZ/60HZ |
| INPUT | |
| Voltage Range | 115~295VAC(± 3 VAC) |
| Frequency Range | 50HZ:(46HZ~54HZ); 60HZ:(56HZ~6HZ) |
| Soft Start | 0~100% 5sec |
| Power Factor | 0.98 |
| OUTPUT | |
| Voltage Precision | 223/230/240x(1 \pm 2%) |
| Frequency Precision | 50/60HZ \pm 0.05HZ |
| Power Factor | 0.7/0.8(Optional) Standard 0.7 |
| Wave Distortion | Linear load<3% Non-linear<6% |
| Overload Capability | Overload (110%~150%)for 30 seconds, then automatically transfer to bypass. When load is normal, it can automatically transfer to normal mode. |
| Crest Factor | 3:1 |
| Transfer Time | 0mSec (AC to DC) On-line double conversion technology |
| BATTERY | |
| DC Supply Voltage | 36VDC |
| Charge Current | 4A/8A(optional) |
| Internal Battery Capacity | (38/65/80/100AH)optional |
| LCD Panel Display | Load level/Battery level, Battery indicator, Utility Power, Bypass, Overload, Fault |
| MISCELLANEOUS SPECS. | |
| Cooling unit | Built-in Air condition unit with the UPS & battery cabinet |
| Communicate Interface | RS232、SNMP Card |
| IP rating | IP65 |
| Operating Temperature | -25° C~60° C |
| Humidity | 0~95% (Non-condensing) |
| Storage Temperature | -25° C~60° C |
| Elevation | <1500m |
| COMMUNICATIONS | |
| Communications Interface | RS232 Serial; Slot for SNMP/Web interface, parallel interface |

Model # MUOD1K

| | |
|--------------------------------------|--|
| Network Management Cards | SNMP-UP2, Dry contacts (optional) |
| Software compatibility | Windows family all versions, Linux, Sun Network OS, IBM Aix, Compaq Tru64 SGI IRIX, FreeBSD, HP-UX and MAC |
| UPS monitoring Software | Supplied along with UPS. Optional SNMP card with web based available on request |
| Communications Cable | RS232 serial |
| PHYSICAL CHARACTERISTICS | |
| Weight(KG) | 85 |
| Dimensions(WxDxH)mm | 640x506x766 |
| CERTIFICATIONS & WARRANTY | |
| Warranty | 2 Years repair Or Replace |
| Compliance | CE, EN/IEC 62040-1:2008, EN/IEC 62040-2:2006, EN/IEC 61000-3-3:2013, EN/IEC 61000-3-2:2014 |
| Quality | EN60950-1, EN60529(IP65 test) |
| | RoHs, ISO9001, ISO14001 |

Electrical Wiring Layout

